

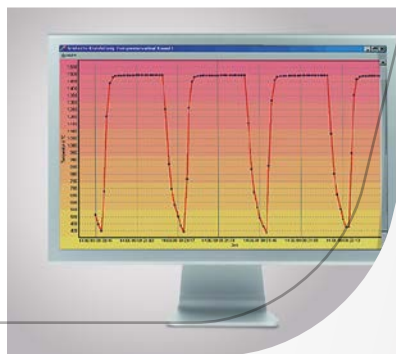
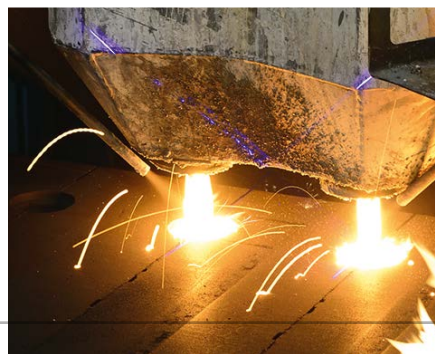
KELLER

*infrared
temperature
solutions*

ITS



N^o1 in terms of
ACCURACY
RELIABILITY
INNOVATION



Accessories Multifunctional Display for panel mounting DA 230A

Accessories Multifunctional Display

Special features

- Red LED display with 13 mm
- Housing size for panel mounting 48x96 mm
- Feed voltage 24 V DC
- Supply voltage 115-230 V/50-60 Hz, optional 24 V AC/DC
- Conversion of analogue input signals in ASCII Format for transference to a PC via RS 485/RS 232

Optional accessory CellaMevis

PC software for transmission, display and storage of measured values with a single PC.



Technical data

Type	DA 230A
Input	Adjustable to the following measuring signals: 0(4) - 20 mA, $R_i = 50 \Omega$; 0(2) - 10 V, $R_i \geq 100 \Omega$ Range user-definable Thermocouples type K, S, J and T with cold junction compensation, Pt 100
Analogue output	0(4) - 20 mA, charge $\leq 500 \Omega$ 0(2) - 20 mA, charge $\geq 1 k$ with automatic current/voltage change-over
Serial interface	RS 485 with point to point communication
Control inputs	2 binary inputs 24 V DC for controlling additional functions
Limit contracts	3 potential-free contacts as make-or-break contact breaking capacity 250 V AC/4 A status indication via LED
Power supply	115-230 V/48-62 Hz Tolerance + 10%, -15 % opt. 24 V/0-62 Hz (AC/DC)
Power consumption	8 VA
Measuring cycle	20 m/sec
Measuring range	Selectable: zero point, final value, decimal point and offset
Display	4-digit/7 segment LED display, 13 mm, red
Display range	-9999 to +9999
Dimensions of unit	H 48 x W 96 x D 157 mm (depth with clamps 170 mm); Cut-out for mounting 45 x 92 mm
Weight	0.5 kg
Protection class	IP 54
Feed voltage	24 V DC/50 mA to supply power to connected pyrometers
Ambient operating temperature	0 to +50 °C
Storage temperature	-25 to +85 °C
Accuracy	$\leq 0.3\%$ of measuring range, at least ± 1 digit
Electromagnetic compatibility	Conforming to EU Directive 89/336/EWG
Adjustable functions and parameters	Smoothing time constant Min. and max. value memory with internal or external reset. Switch point and hysteresis (limit contacts) Linearisation function with up to 10 inflection points. Validity check

KELLER

Creating Solutions

infrared
temperature
solutions **ITS**



- Headquarters
- Sales and Service Center
- Sales abroad



IO-Link

PROFI
BUS

Keller HCW GmbH
Infrared Temperature Solutions (ITS)
Carl-Keller-Straße 2-10
49479 Ibbenbüren-Laggenbeck
Germany

www.keller.de/its
Tel. +49 (0) 5451 850
Fax +49 (0) 5451 85412
its@keller.de

Sales and Service Center

Frankreich
www.keller.de/its
Tel. +33 (0) 951 453050
its@keller.de

Italien
www.giga-tech.it
Tel. +39 (0) 296489130
contatti@giga-tech.it

Österreich
www.sensotec.at
Tel. +43 313 551 650
office@sensotec.at

Russland
www.ampermetr.com
Tel. +7 343 384 55 45
info@ampermetr.com

Spanien
www.umi.es
Tel. +34 94 446 62 50
comercial@umi.es

China
www.keller-its.cn
Tel. +86 (0) 10 828 679-20
keller@germantech.com.cn

Indien
www.keller-itsindia.com
Tel. +91 (0) 98841 11025
info@keller-itsindia.com

Korea
www.ultratec.co.kr
Tel. +82 (0) 70 8282 5979
ellen@ultratec.co.kr