

## Universal Cutter

### Sizes

Facing bricks, DF, standard bricks etc.  
Hollow bricks, 2 DF up to 20 DF  
Light-weight hollow bricks 2 DF up to 20 DF  
Hollow bricks, individual and multiple clay column  
Cutting length TS from 30 to 600 mm  
Double table design up to max. 600 mm possible with waste cut

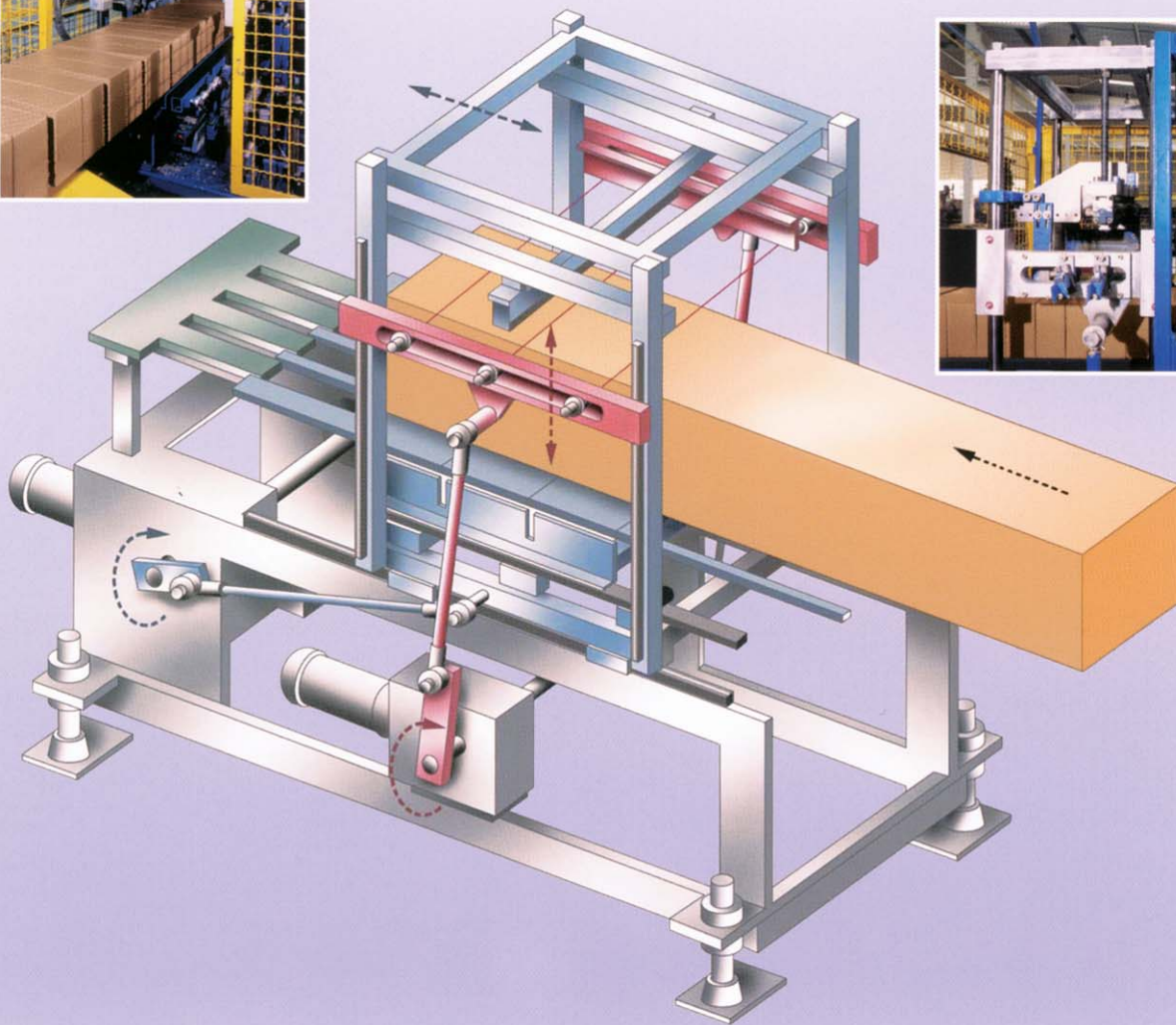


### Technical characteristics

- 1..... Base frame of solid welded steel construction.
- 2..... The clay column is transported via a plastic sliding belt.
- 3..... The driving elements are maintenance-free running in ball bearings and linear bearing systems.
- 4..... The clay column speed is measured by means of a measuring roller/measuring belt with pulser. When used with an automatic lath loader the measuring belt is additionally equipped with a tachometer.
- 5..... The high cutting accuracy is achieved by electronic control.
- 6..... The cutter is driven by two servo-drives with electronic cam discs and double thrust cranks for table and cutting movements.

The penetrometer value of the clay column must not exceed  $2 \text{ kg/cm}^2$ .

(In case of higher value, please contact our design department.)



K/002/NW/0201/GB - Printed in Germany - Subject to technical alterations

### Operation

Continuous

### Cutting System

Vertical cut: cutting table design No. 1 – 3  
Side cut: cutting table design No. 4

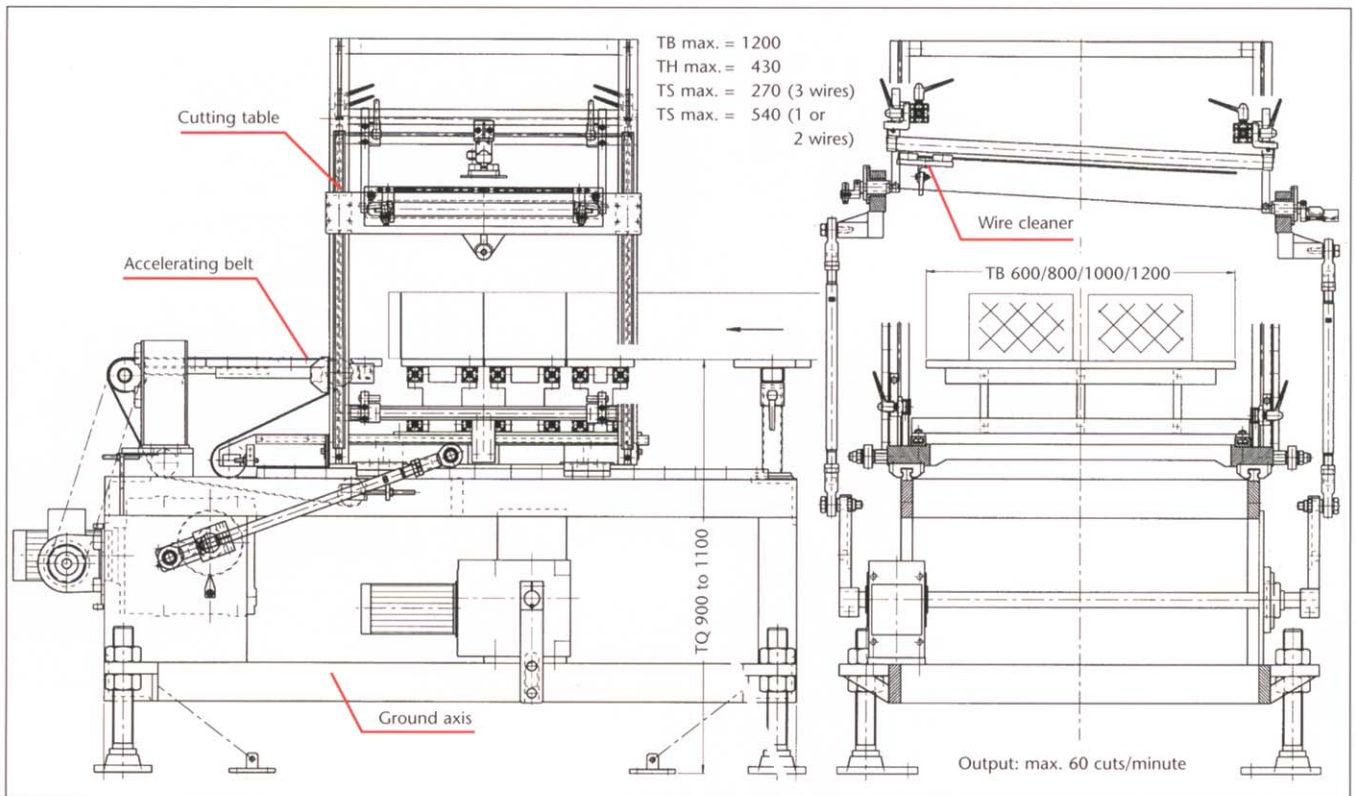
### KELLER HCW offers innovative technologies for the production of:

- Bricks, hollow bricks and roof tiles
- Facing bricks and pavers
- Split and floor tiles
- Refractory products as well as
- Measuring and control system
- Automation

**KELLER HCW**

KELLER HCW GmbH – a company of the CERIC Group





## Additional equipment

Electronic edge cut-out device  
pre-cutting rollers, chamfering device.

## Pellet loading

Automatic lath loader for 2, 3 or 4 laths resp.  
Automatic lath loader of double design.  
Transfer gripper combined with product grouping conveyor  
and controlled drive.

## Additional equipment

Turning device with 6 turntables

**Output of the cutter with turning device:**

single turning device = 50 cuts/min.

Double turning device = 40 cuts

Turn-over device – pendulum turn-over device

**Output of the cutter combined with turn-over  
device = 30 cuts/min.**

## Cutting tables

**Cutting table design 1 “vertical cut”**

(for large sizes TB = 600 mm / TH = 400 mm)

The number of products per cut depends on the cutting  
thickness:

TS = 50 mm up to 129 mm = 3 products/cut

TS = 130 mm up to 269 mm = 2 products/cut

TS = 270 mm up to 540 mm = 1 product/cut

### Effective output

(with cutting table design for vertical cut depending on clay  
column height)

### Number of cuts/minute

TH up to 130 mm = 60 cuts/minute

TH = 131 – 300 mm = 50 cuts/minute

TH = 301 – 550 mm = 40 cuts/minute

## Additional equipment cutting table design 1

Wire cleaner, wire tightening device,  
change cutting inserts

## Cutting table design 2 “vertical cut”

(for small sizes TB = 350 mm / TH = 350 mm)

Output and additional equipment as for cutting table 1

## Cutting table design 3 “vertical cut” without chamfering device

(for sizes TB max. = 330 mm / TH max. = 350 mm)

TS = 30 mm up to 120 mm = 3 products/cut

TS = 121 mm up to 240 mm = 2 products/cut

TS = 241 mm up to 360 mm = 1 product/cut

## Cutting table design 3 “vertical cut” with chamfering device

(for sizes TB max. = 350 mm / TH max. = 350 mm)

TS = 30 mm up to 120 mm = 2 products/cut

TS = 121 mm up to 360 mm = 1 product/cut

## Cutting table design 3 “vertical cut” with chamfering device

(for size TB max. = 350 mm / TH max. = 350 mm)

TS = 45 mm up to 90 mm = 3 products/cut

TS = 91 mm up to 180 mm = 2 products/cut

TS = 181 mm up to 360 mm = 1 product/cut

### Effective output

TH up to 130 mm = 50 cuts/minute

TH = 130 mm up to 230 mm = 40 cuts/minute

## Additional equipment for cutting table 3 (like cutting table design 1)

### Cutting table design 4 “side cut”

max. clay column width = 600 mm, max. clay column height = 400 mm

### Individual cut

cutting thickness TS = 100 – 360 mm, number of products per cut: 1

### Double cut

cutting thickness TS = 200 – 300 mm, number of products per cut: 2

**Effective output:** 35 cuts/minute

## Operating examples

Automatic lath loader

Transfer device with product grouping conveyor.

The driving gear of the transfer gripper is controlled electrically and  
matches the speed of the grouping conveyor. According to  
requirements it has to be checked whether frequency control or  
D.C. control is preferred.

When the cutter is used with an automatic lath loader manufactured  
by another company (e.g. Frey or Lingl) it is on condition that the  
belt drives of the respective automatic lath loaders are equipped  
with D.C. variable speed drives.

The cutter can be used as an individual machine for cutting different  
column lengths, e.g. in the refractory industry.

Transfer device and gripper or suction device, alternatively

Robot and gripper or suction device.