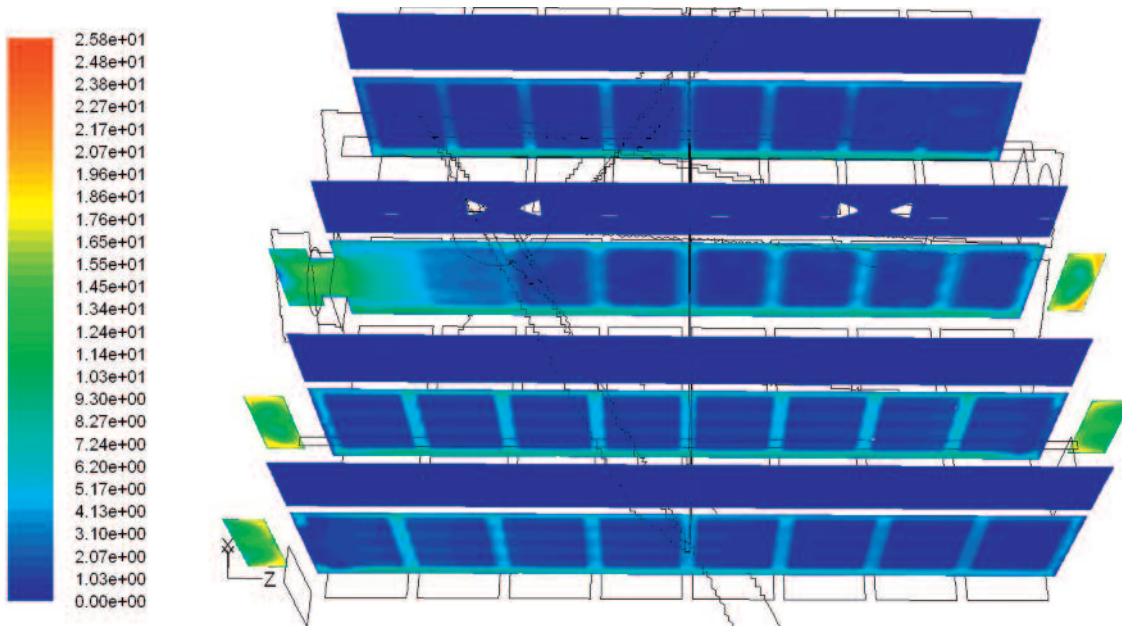


Kiln KELLER HCW Kiln Technology Technology

KELLER HCW

A DIVISION OF GROUPE *LEGRIS* INDUSTRIES



Flow speeds in the load – Fluent Simulation



Hot gas circulation in the kiln

- Usage in a temperature range of up to 600 °C
- For kiln outputs of 100–1200 tons, fired/day
- Minimize temperature differences
- Higher heat transmission in the convection range (increase heat transfer coefficient)
- Improvement of the firing result
- Reduction of the air quantities in the kiln
- Energy saving (up to 10 %) by increasing the heat transmissions and by higher temperature homogenization
- For setting widths of up to 8,5 meters
- Increase of the cooling air temperature, decrease of the temperature losses when leaving the kiln
- Higher temperature air from the cooling into the firing zone
- Optimized cooling process
- Less air flow rate in the cooling zone
- Release of some burner groups – energy savings
- Decrease of the flue gas temperature, decrease of the flue gas losses
- Improved oxygen transport into packs in case of high percentage of additives in the clay body
- Release of the pre-fire burners – savings energy

KELLER HCW GmbH · Carl-Keller-Straße 2-10 · 49479 Ibbenbüren-Laggenbeck · Germany · Telefon: +49 54 51 85-0 · Telefax: +49 54 51 85-310
E-Mail: info@keller-hcw.de · www.keller-hcw.de